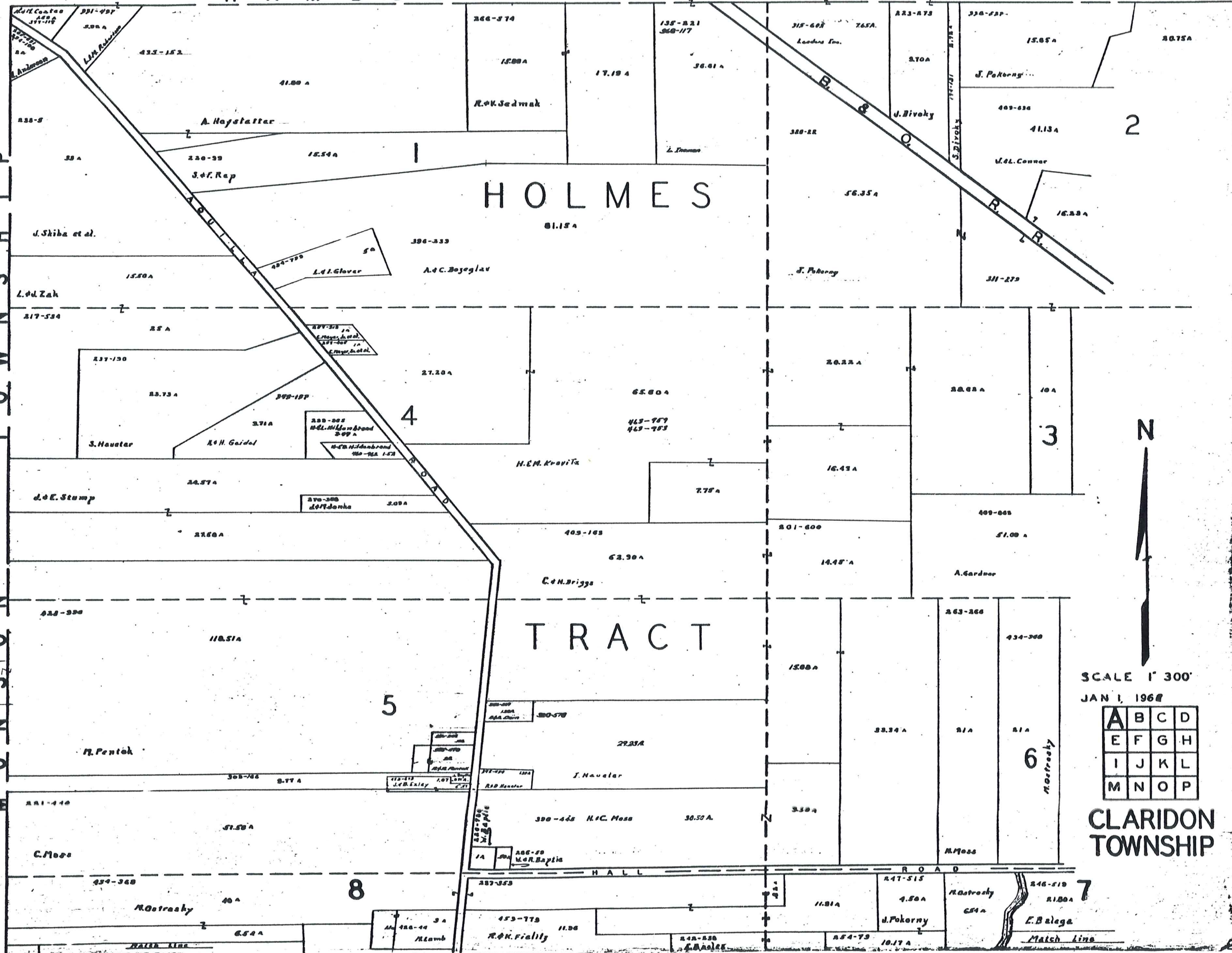


H A M B D E N T O W N S H I P

T O W N S H I P
M U N I C I P A L I T Y

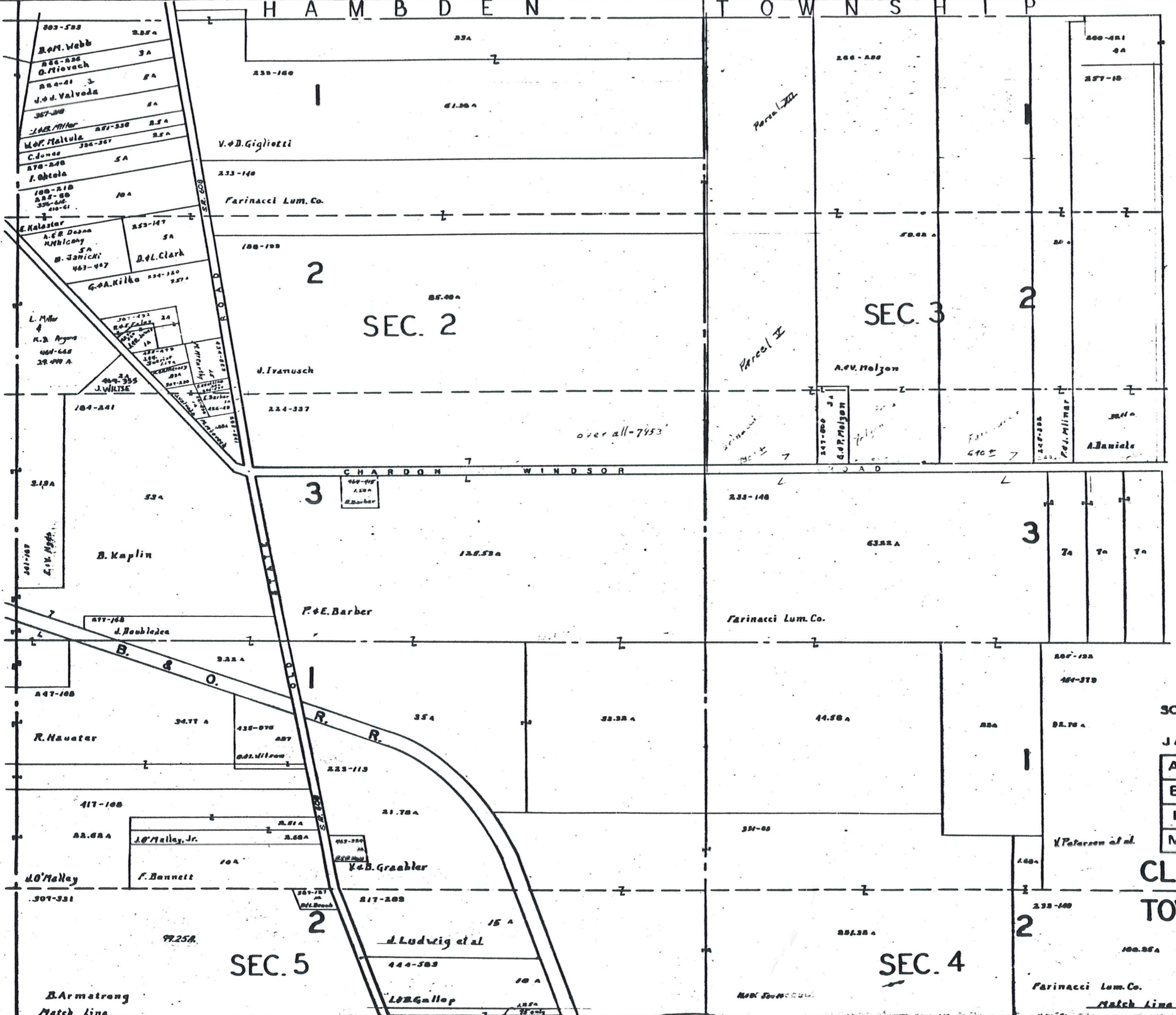


SCALE 1" = 300'
JAN 1, 1968

A	B	C	D
E	F	G	H
I	J	K	L
M	N	O	P

CLARIDON
TOWNSHIP

H A M B D E N T O W N S H I P



SCALE 1" = 300'

JAN 1, 1964

A	B	C	D
E	F	G	H
I	J	K	L
M	N	O	P

CLARIDON TOWNSHIP

SEC. 5

SEC. 4

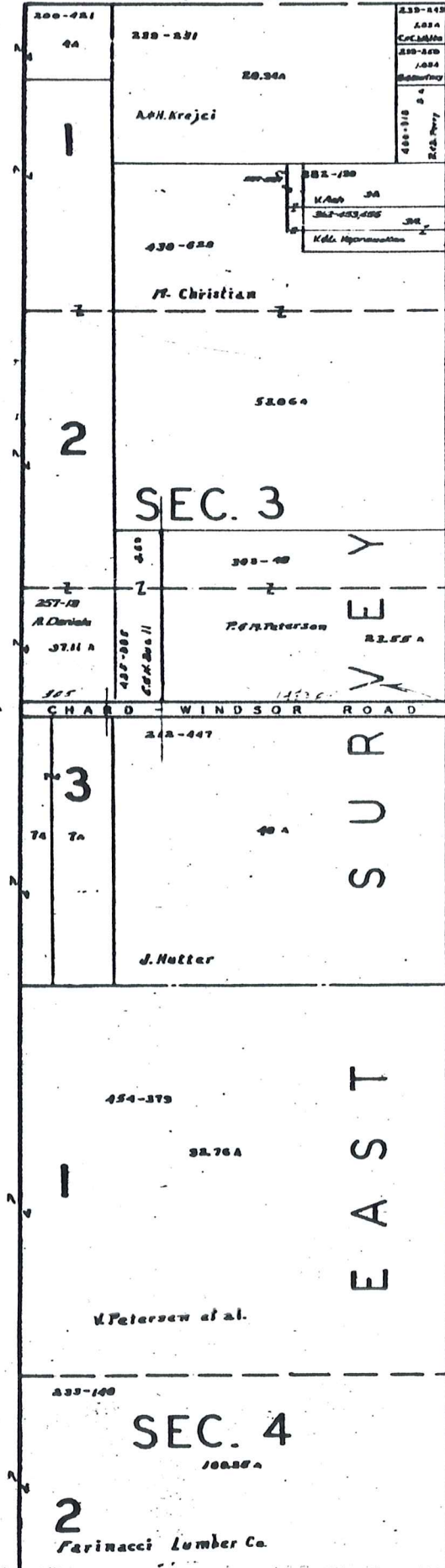
SEC. 2

SEC. 3

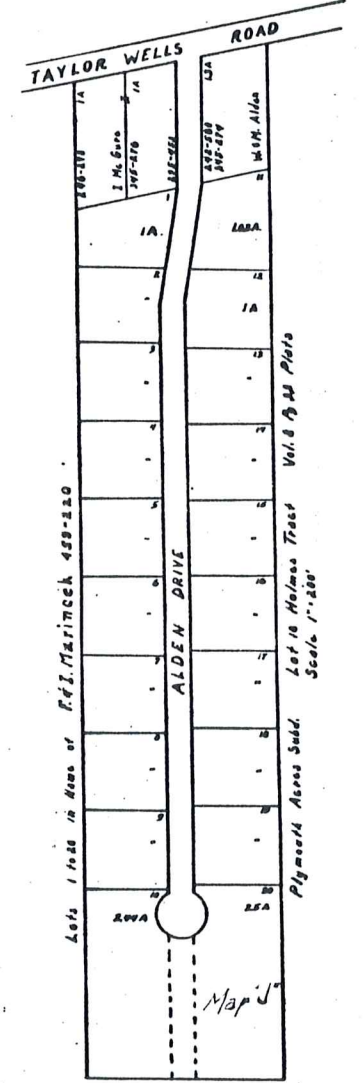
B. Armstrong
Match line

Farinacci Lum. Co.
Match line

HAMBDEN TOWNSHIP



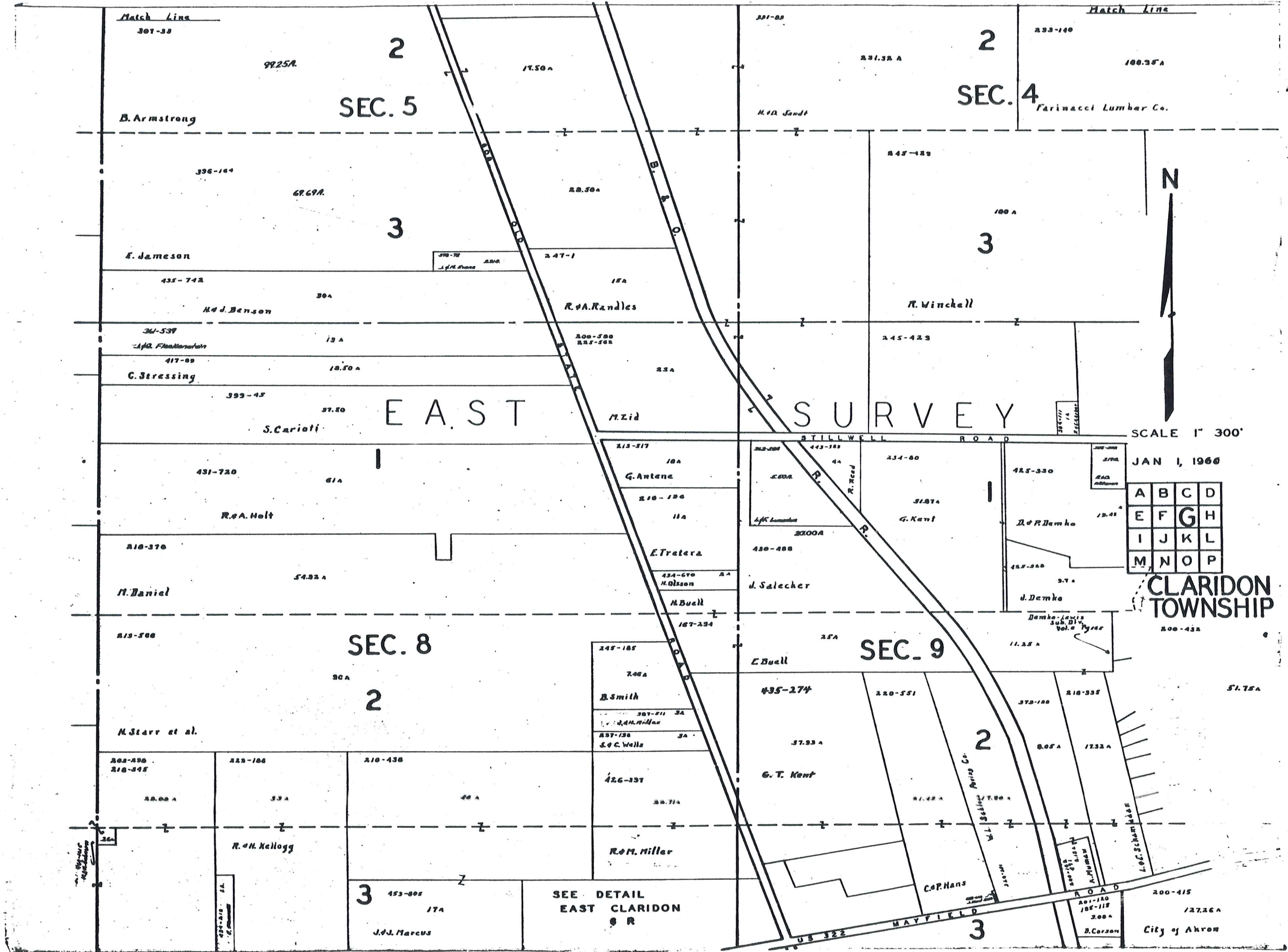
HAMBDEN TOWNSHIP
EASTBURG TOWNSHIP



SCALE 1" = 300'
JAN 1, 1960

A	B	C	D
E	F	G	H
I	J	K	L
M	N	O	P

CLARIDON TOWNSHIP



SCALE 1" = 300'

JAN 1, 1966

A	B	C	D
E	F	G	H
I	J	K	L
M	N	O	P

CLARIDON TOWNSHIP

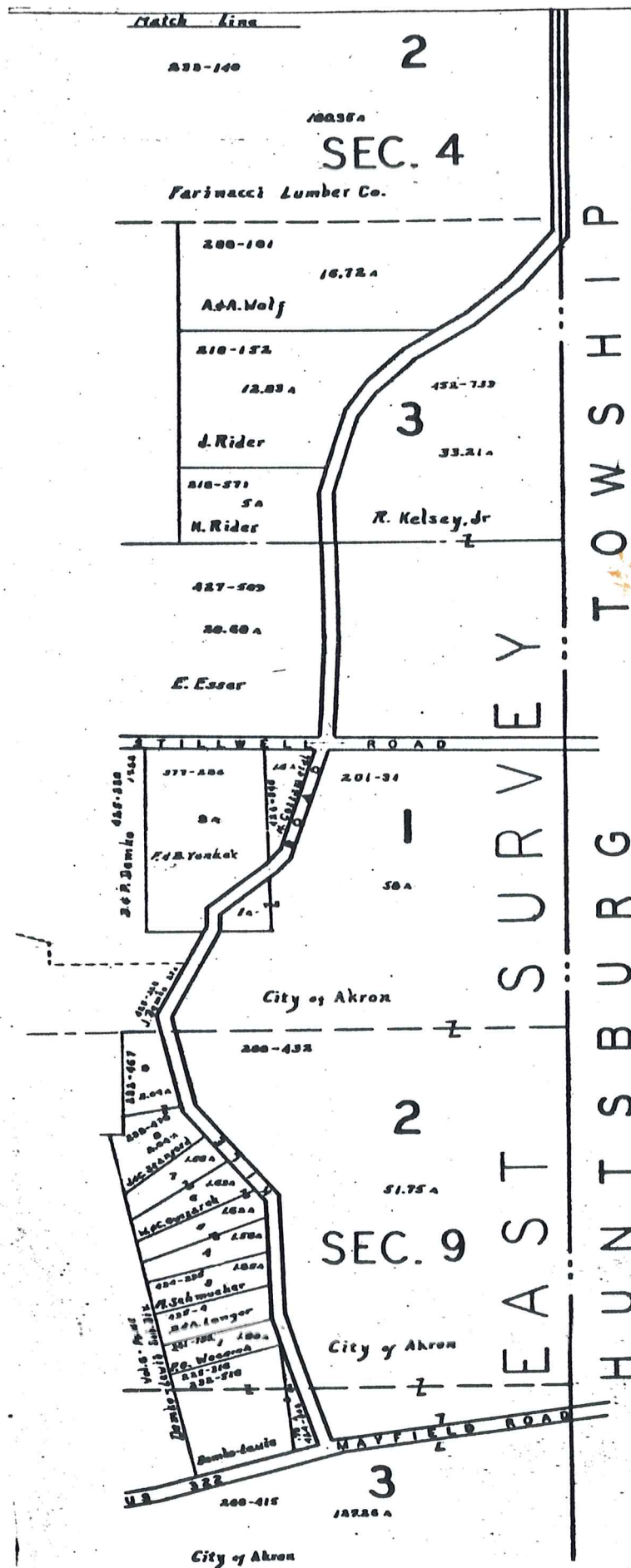
200-415

51.75A

200-415

127.26A

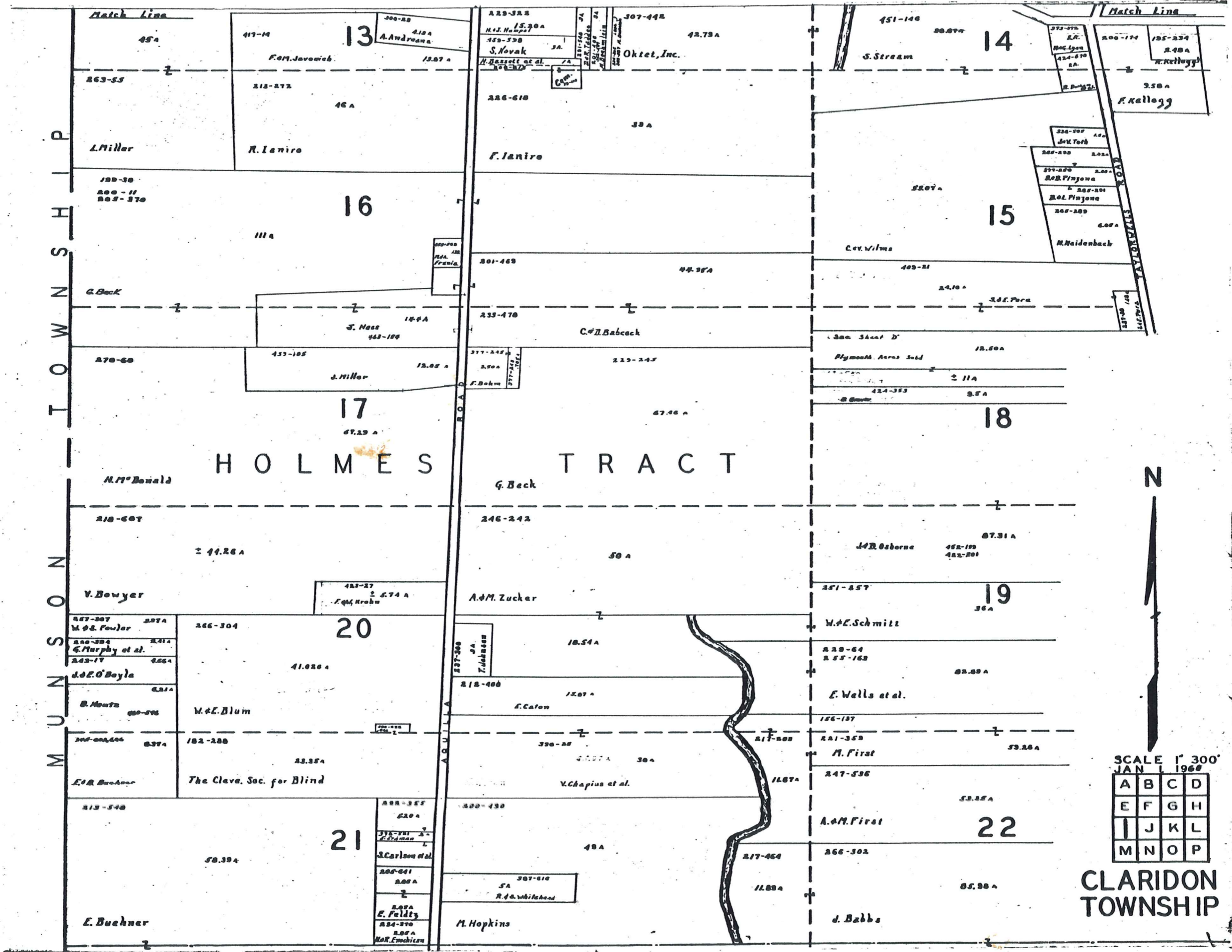
City of Akron



SCALE 1" = 300'
 JAN 1, 1964

A	B	C	D
E	F	G	H
I	J	K	L
M	N	O	P

CLARIDON TOWNSHIP



P
H
S
N
T
O
W
N
S
H
I
P

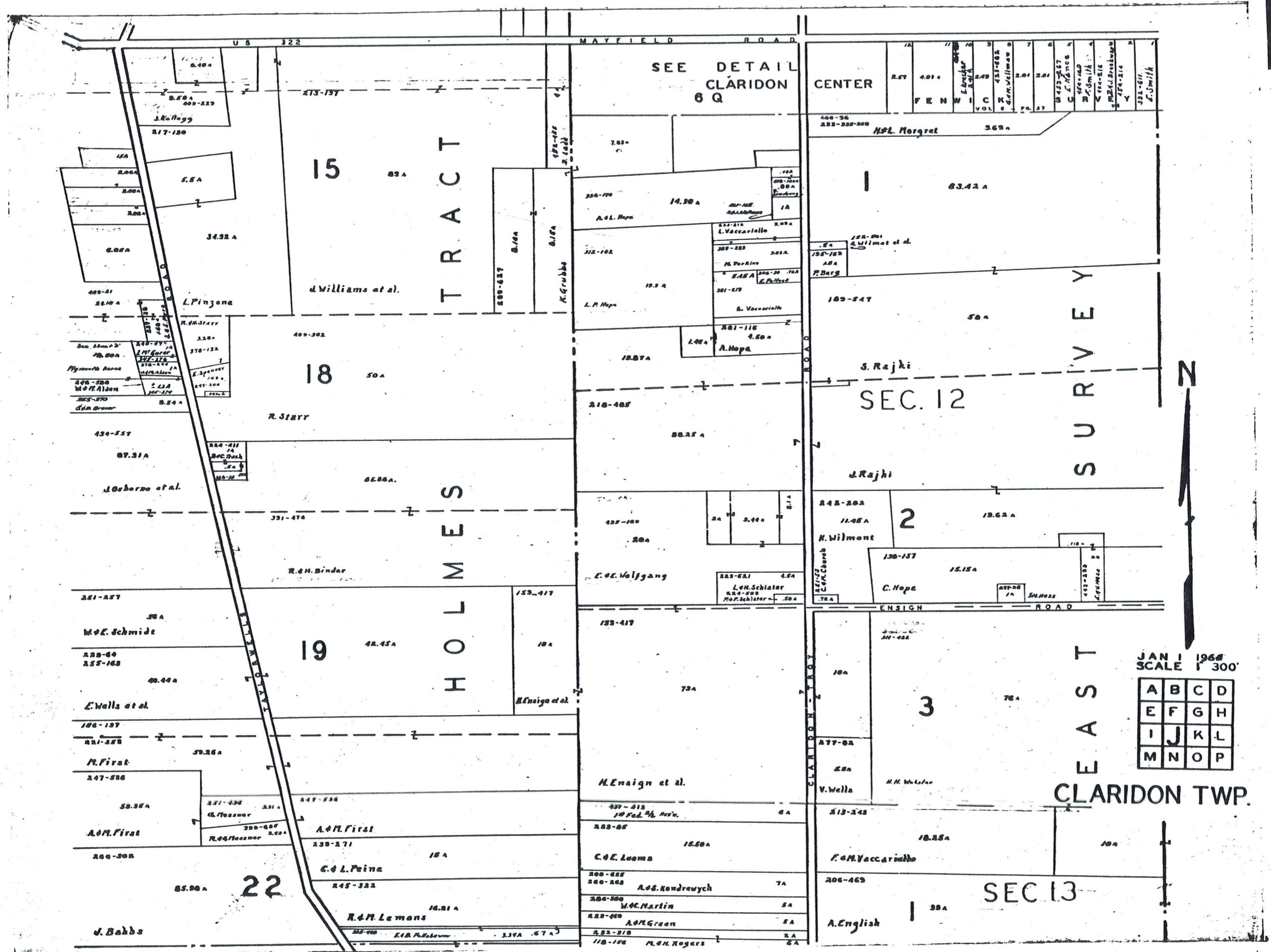
H O L M E S T R A C T



SCALE 1" = 300'
JAN 1 1968

A	B	C	D
E	F	G	H
I	J	K	L
M	N	O	P

CLARIDON
TOWNSHIP



SEE DETAIL
CLARIDON
6 Q

CENTER

257	201	202	203	204	205	206	207	208	209	210	211	212	213	214	215	216	217	218	219	220
F	E	N	W	I	C	K	R	G	M	J	L	M	N	O	P	Q	A	B	C	D
VOL. 431-488																				

TRACT

HOLMES

SURVEY

EAST

CLARIDON TWP.

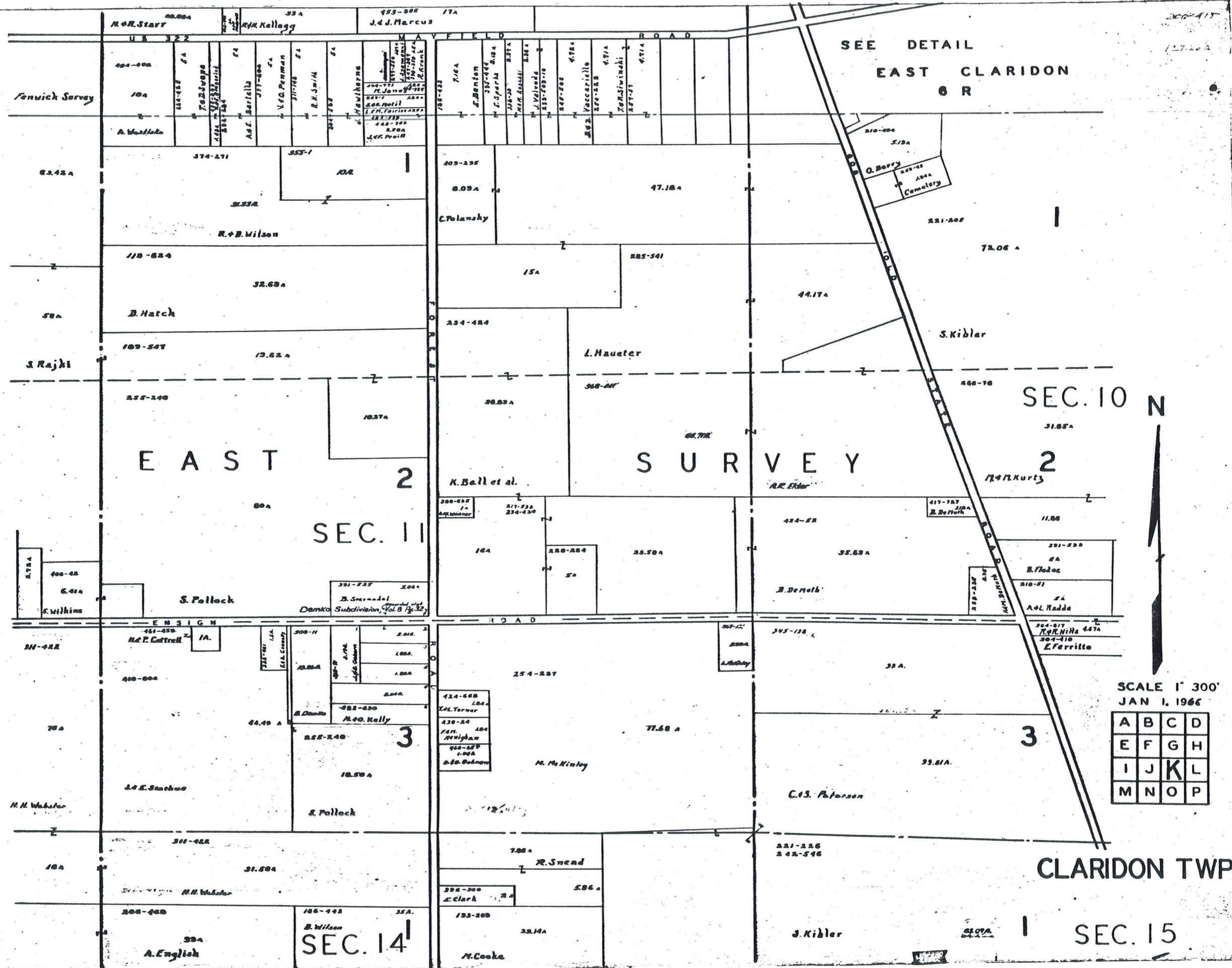


JAN 1 1968
SCALE 1" = 300'

A	B	C	D
E	F	G	H
I	J	K	L
M	N	O	P

SEC. 12

SEC. 13



SEE DETAIL
EAST CLARIDON
6 R

EAST
2
SEC. 11

SURVEY

SEC. 10
2

3

3

SEC. 14

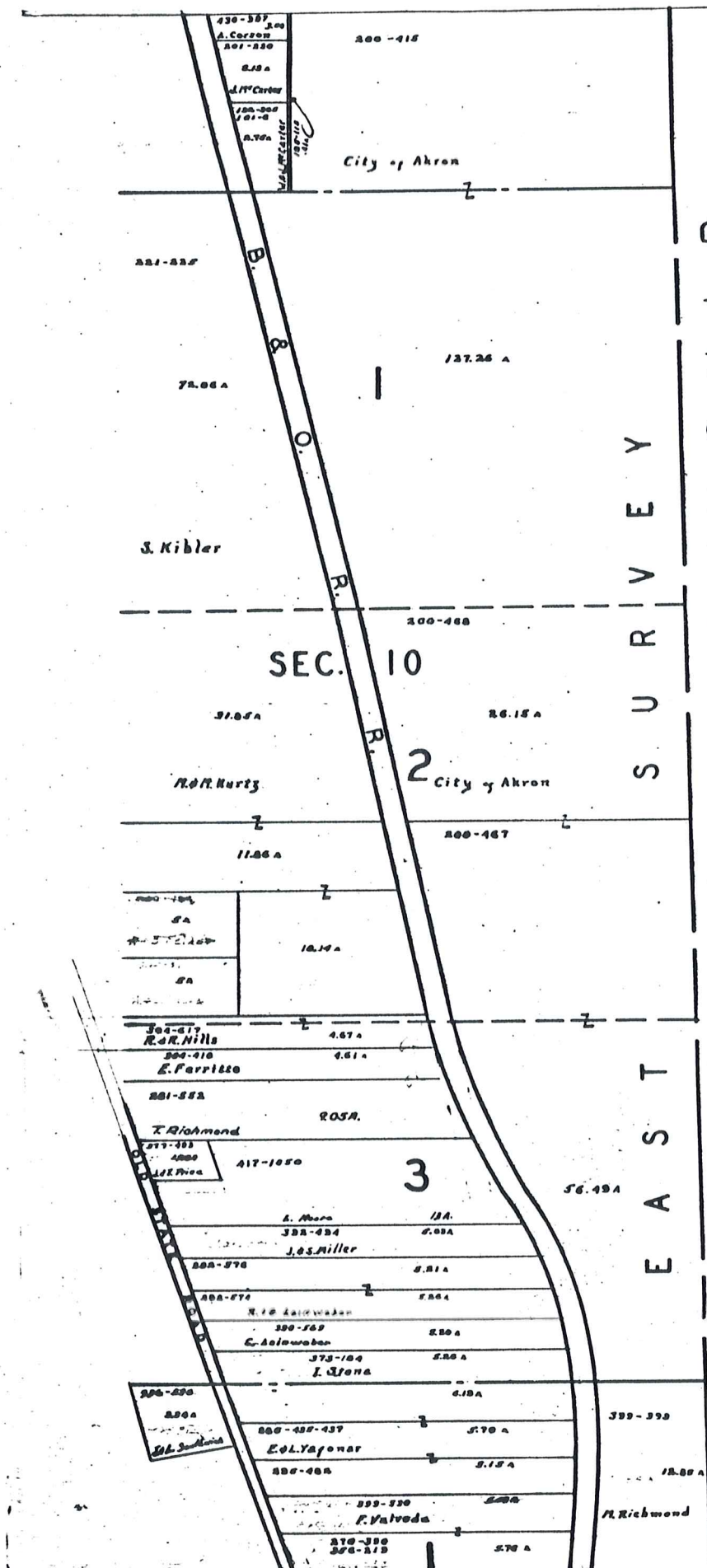
CLARIDON TWP.

SEC. 15

SCALE 1" = 300'
JAN 1, 1966

A	B	C	D
E	F	G	H
I	J	K	L
M	N	O	P





S U R V E Y
 T O W N S H I P
 E A S T
 H U N T S B U R G

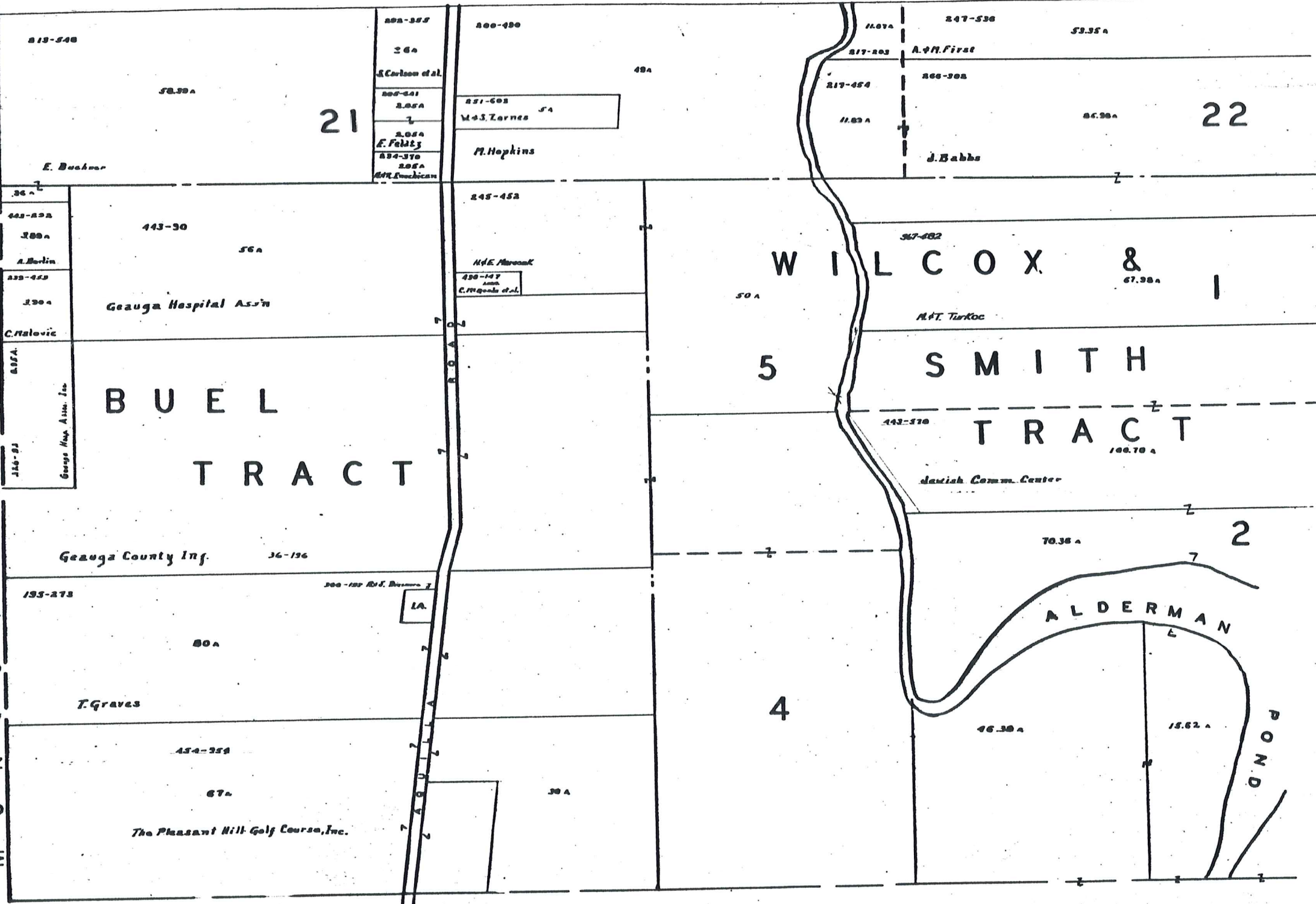


SCALE 1" = 300'
 JAN. 1, 1966

A	B	C	D
E	F	G	H
I	J	K	L
M	N	O	P

CLARIDON TWP.

P
H
S
N
W
T
O
N
S
O
N
M
U
N
I
P
S
O
N
M
U
N
I
P
S
O
N



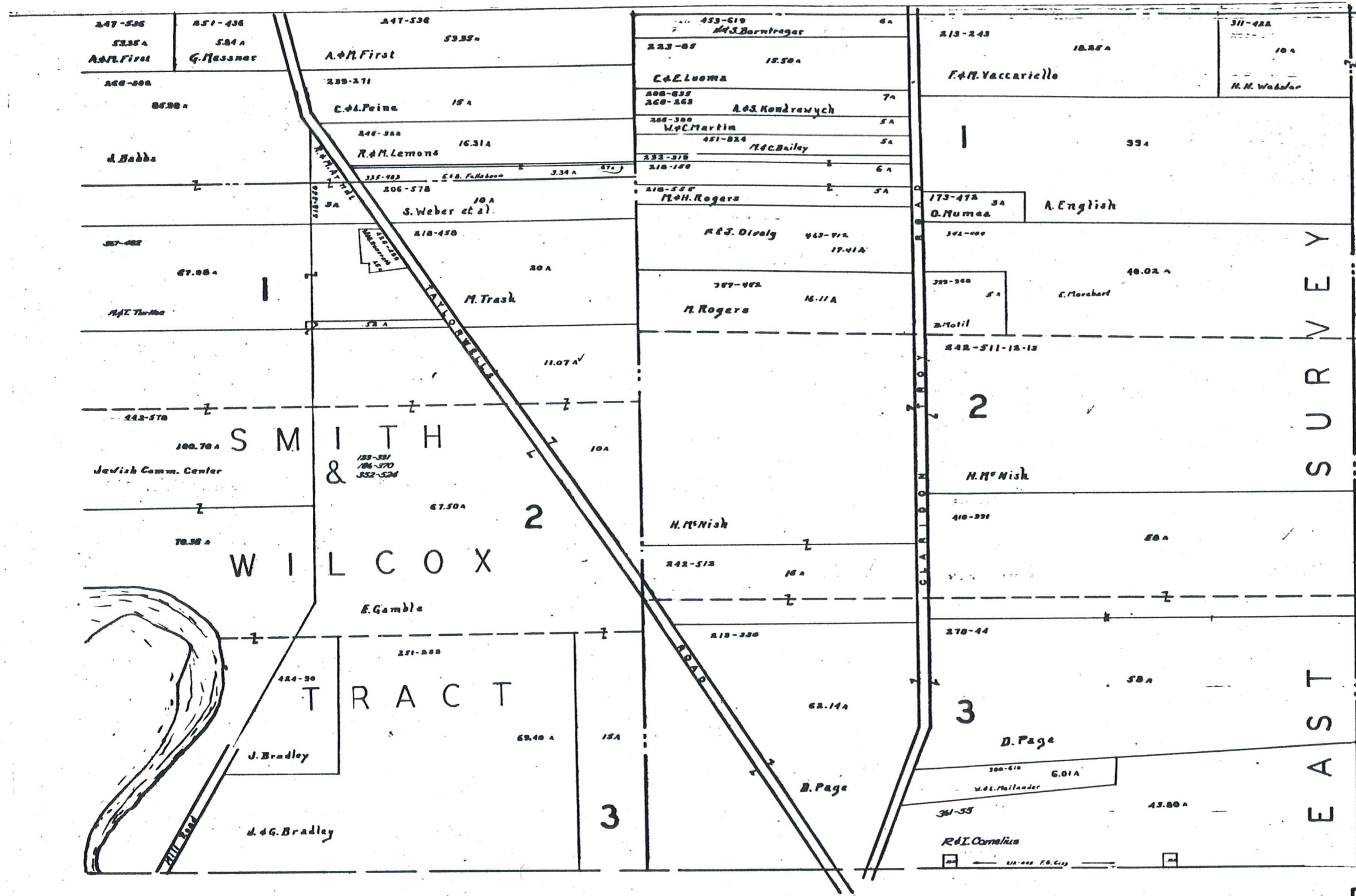
BURTON TOWNSHIP



SCALE 1" = 300'
JAN 1, 1966

A	B	C	D
E	F	G	H
I	J	K	L
M	N	O	P

CLARIDON TWP.

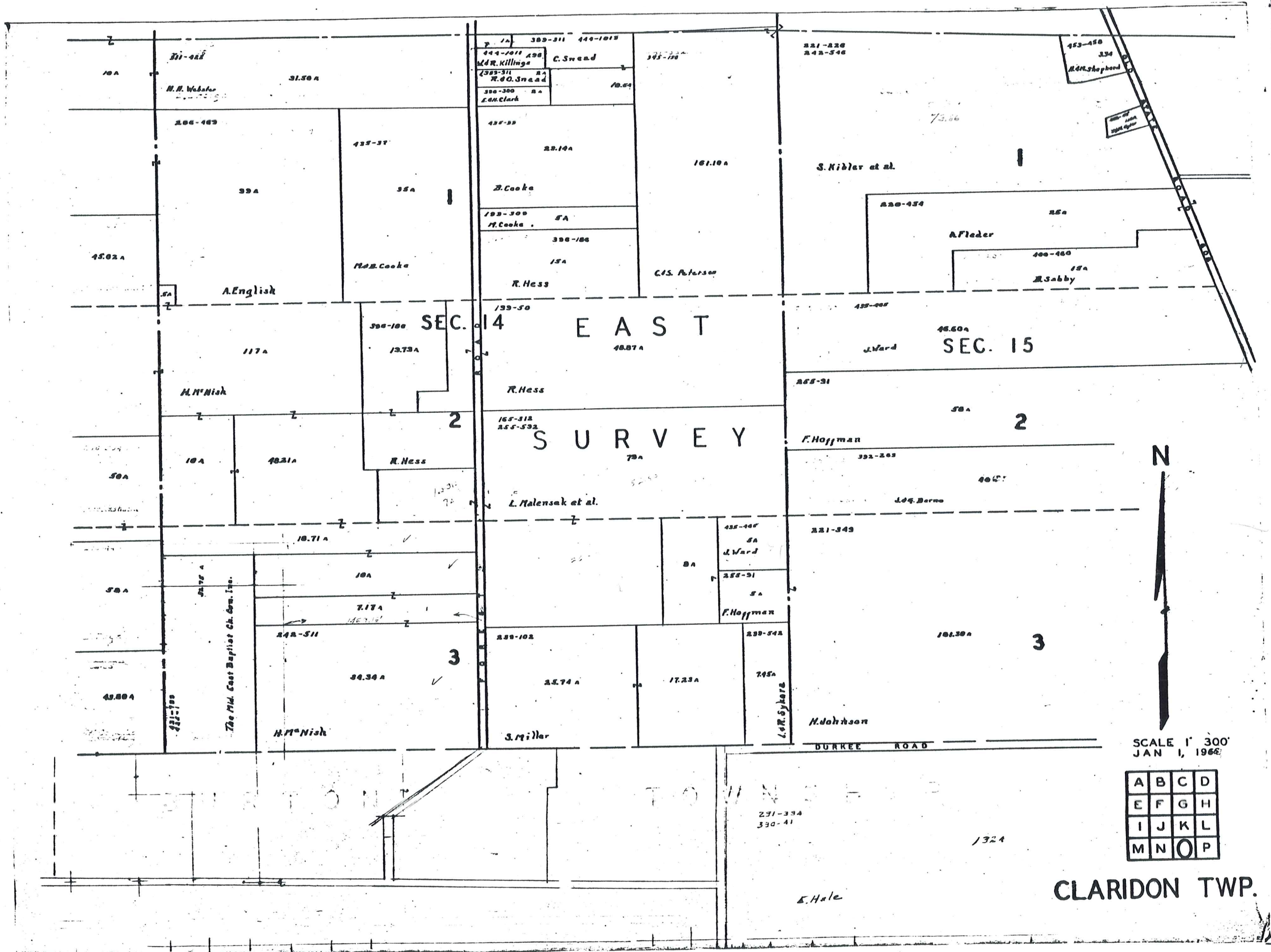


SCALE 1" = 300'
JAN 1, 1966

BURTON TOWNSHIP

A	B	C	D
E	F	G	H
I	J	K	L
M	N	O	P

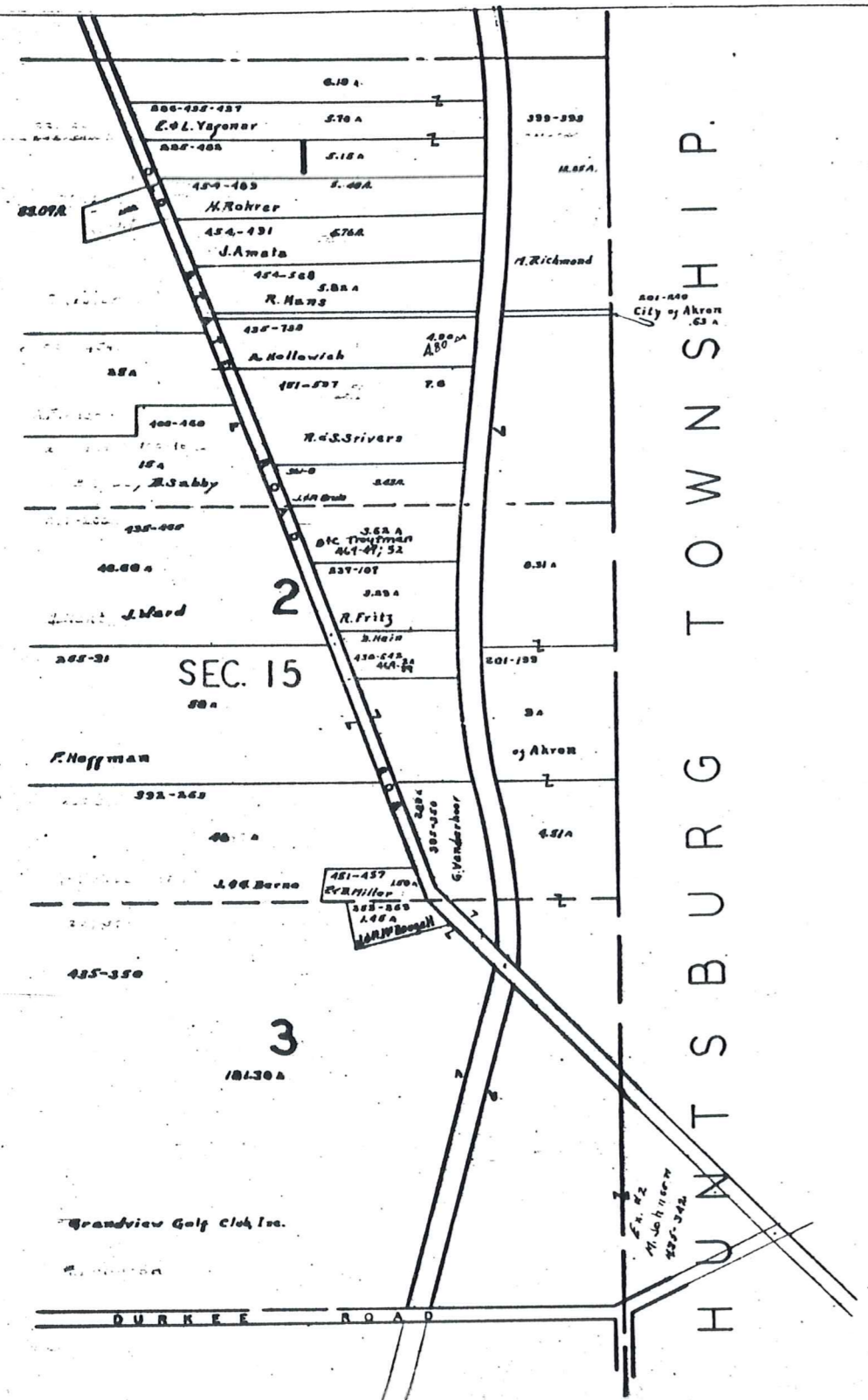
CLARIDON TWP.



SCALE 1" = 300'
 JAN 1, 1966

A	B	C	D
E	F	G	H
I	J	K	L
M	N	O	P

CLARIDON TWP.



H U N T S B U R G T O W N S H I P .

BURTON TWP.



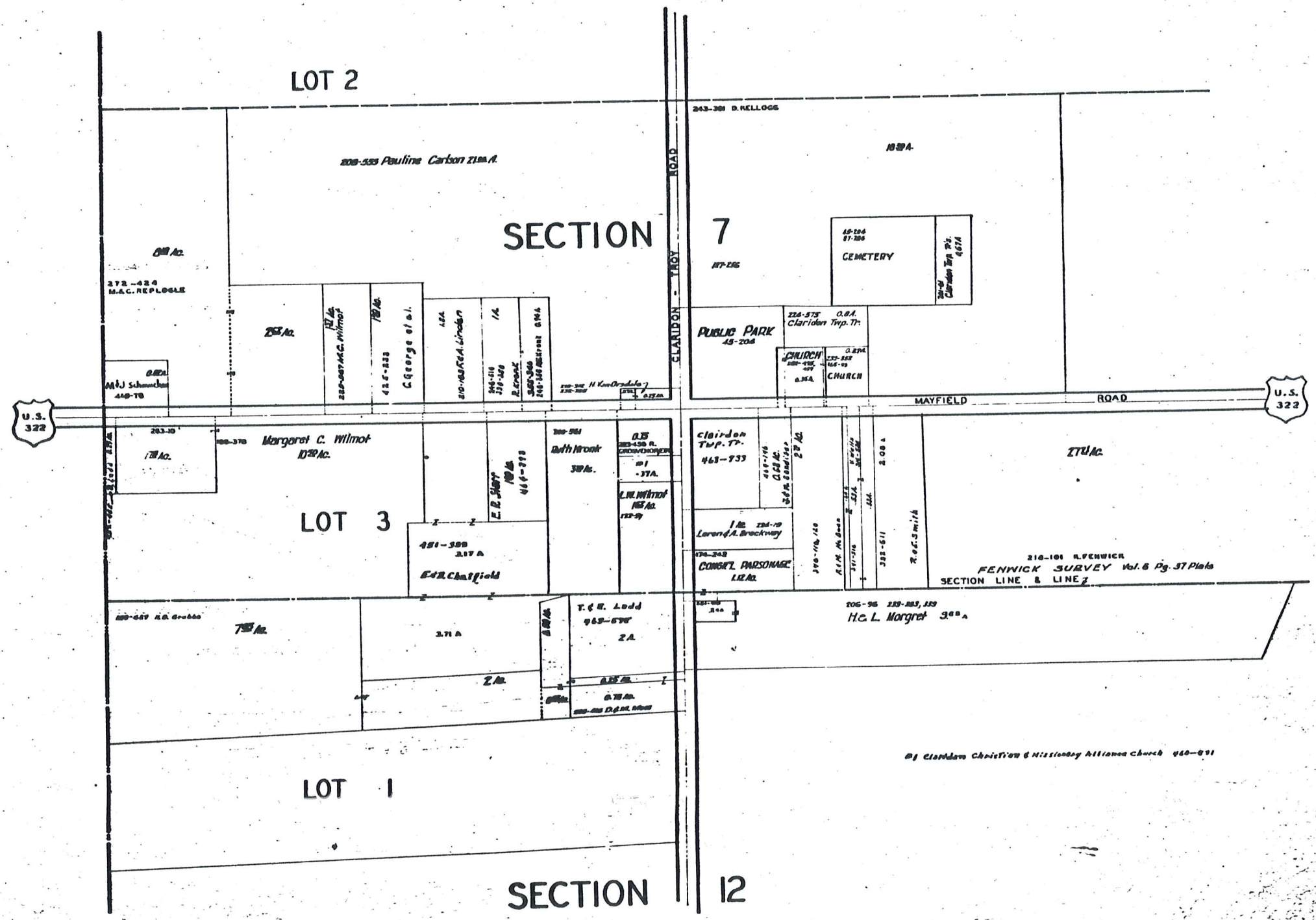
SCALE 1" = 300'
JAN 1, 1965

A	B	C	D
E	F	G	H
I	J	K	L
M	N	O	P

CLARIDON TWP.

CLARIDON T.P. [CENTER]

SCALE 1"=25' OR 165 FT.
JAN 1, 1966



EAST CLARIDON
AND VICINITY

CLARIDON TP.

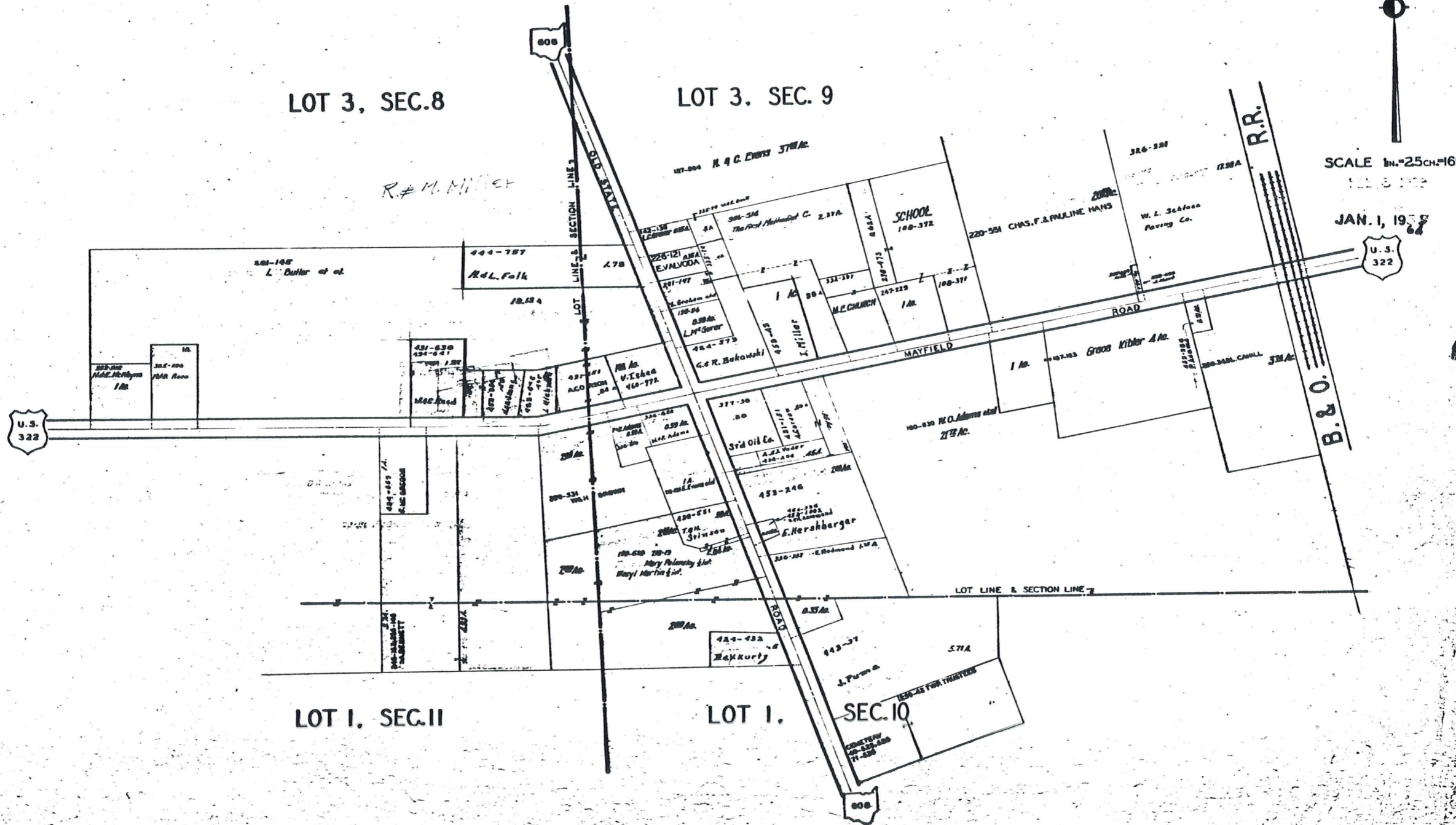
EAST CLARIDON
AND VICINITY

LOT 3, SEC. 8

LOT 3, SEC. 9

SCALE 1 in. = 25 ch. = 165'

JAN. 1, 1957



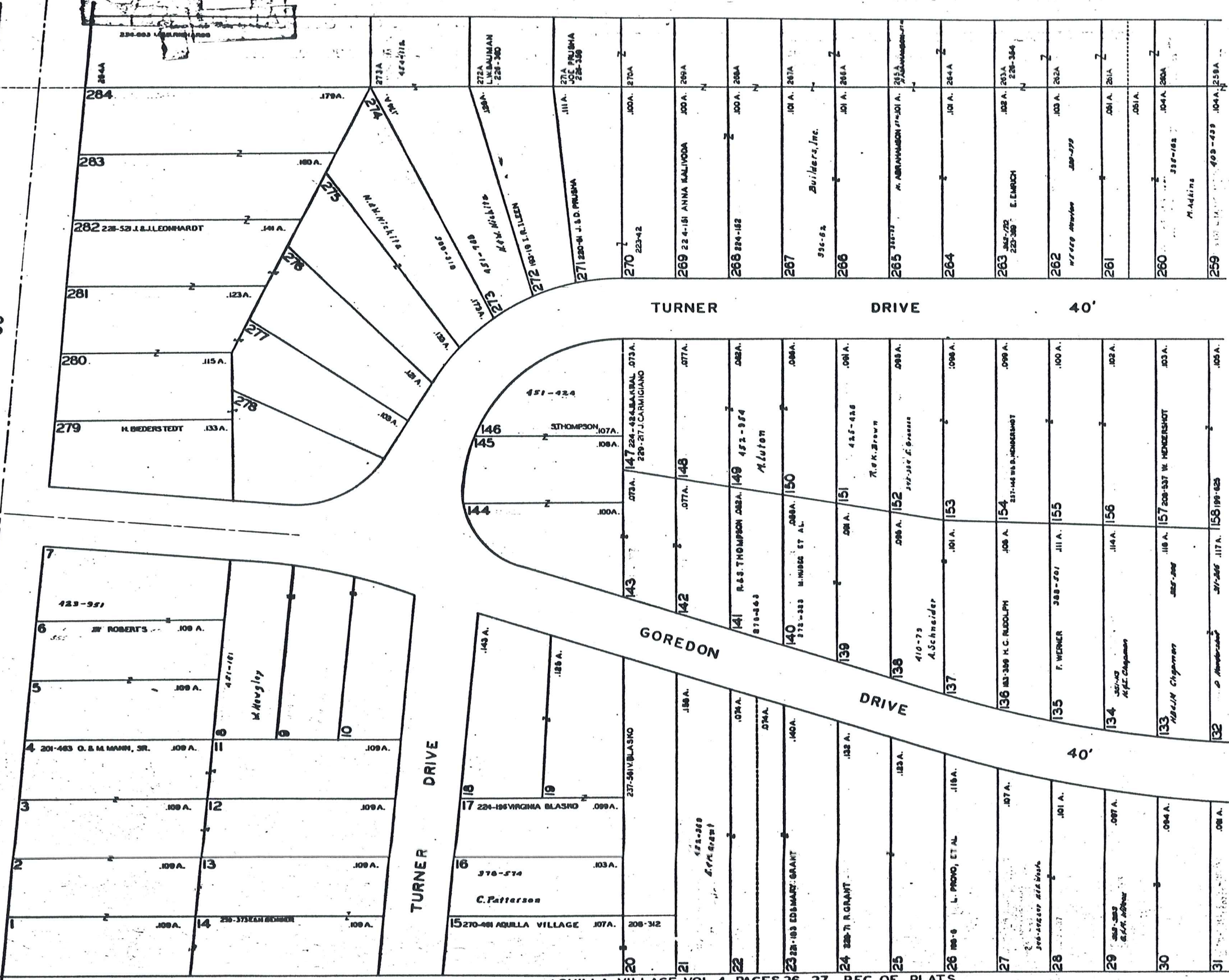
SCALE 1"=30 FT.



COUNTY AQUILLA TOWNSHIP

ROAD

60'



LAKE AQUILLA SUBDIVISION NO. 1 & LAKE AQUILLA SUBDIVISION NO. 1 ADDITION VOL. 1 PGS 50 & 51 REC. OF PLATS VOL. 4 PGS 23 & 24 REC. OF PLATS

NOW AQUILLA VILLAGE VOL. 4 PAGES 26-27 REC. OF PLATS

JAN. 1, 1968

6-S WEST

SEE 6-S-CTR.

M. Addins

M. Addins

SCALE 1" = 30 FT.



SEE 6-S-WEST

SEE 6-S-EAST

31	291 A.	
32	271-289 045	289-66
33	237-238 E S. MURPHY	231 A.
34		208 A.
35		208 A.
36		208 A.
37	331-331	301 A.
38	333-333	304 A.
39	309-301 M. MCGREGOR, ET AL.	307 A.
40		308 A.
41	174-18 E. DAZEN	312 A.
42	179-148 M. MCGREGOR	315 A.
43	181-180 E. ANDREWS 333-47	318 A.
44	115-115 E. ANDREWS	320 A.
45	111-111 E. ANDREWS	323 A.
46	94-97 B. SMITH	325 A.
47	92-92 E. BECHTOLD	328 A.
48	411-1023	331 A.
49	400-400 E. M. GREEN	334 A.
50	CLARK Highway 320-327	338 A.
51	335-335 E. A. ANDERSON	341 A.
52	224-224 E. F. O. AMYGREENE	344 A.
53		347 A.
54		350 A.
55	177-188 AQUILLA LAKE COMMUNITY, INC.	353 A.
56	141-141 GOREDON	356 A.

132	155-155 W. KENDERSHOT	101 A.
131	204-203 S. WEIKS	104 A.
130	201-198 S. WEIKS	107 A.
129	181 A 220-246 S. A. WEIKS	109 A.
128 B	189-241 M. HOUSEK	109 A.
128 A	189-189 L. CRUSHOLD	107 A.
127	161-161 G. HENRY	108 A.
126	151-151	104 A.
125	145-145	104 A.
124	131-131	102 A.
123	123-123 N. GEMPE	101 A.
122	122-122	108 A.
121	110-110 R. J. LEWIS	108 A.
120	107 A 170	107 A.
119	104 A 171	108 A.
118	187-26 R. E. A. T. SPENCER	108 A.
117	173-217 R. H. M. L. THOMPSON	108 A.
116	174-174	108 A.
115	175-175	108 A.
114	220-201 H. CALDWELL	107 A.
113	200-217 M. MURPHY	107 A.
112		108 A.
111	201-204 M. MURPHY	108 A.
110	228-201 E. C. HOFFMAN	108 A.
109	200-202 C. HOFFMAN	108 A.

259	104 A 239 A	
258	104 A 238 A	
257	105 A 237 A	
256	105 A 236 A	
255	105 A 235 A	
254	105 A 234 A	
253	106 A 233 A	
252	106 A 232 A	
251	107 A 231 A	
250	107 A 230 A	
249	108 A 229 A	
248	108 A 228 A	
247	108 A 227 A	
246	108 A 226 A	
245	109 A 225 A	
244	110 A 224 A	
243	110 A 223 A	
242	110 A 222 A	
241	110 A 221 A	
240	111 A 220 A	
239	111 A 219 A	
238	111 A 218 A	
237	108 A 217 A	
236	108 A 216 A	
235	107 A 215 A	
234	107 A 214 A	

6-S

SCALE 1/4"=30 FT.

SEE 6-S-CTR.

57	241-248 G. CRIGHTON ET AL.	.104 A.
58	431-718 MAG. HACKETT	.104 A.
59	183-221 A. DOUBLER	.104 A.
60	179-321 J.B. & L. CHAPMAN	.103 A.
61	174-182 D.E. WHITNEY	.103 A.
62	221-526 H. HENDERSON	.103 A.
63	244-19 W. D. DUNN	.103 A.
64	223-228	.103 A.
65	185-428 J.J. ZEMMA ET AL.	.103 A.
66	244-248 W. DENNING & W. J. J. J.	.103 A.
67	244-248	.103 A.
68	244-248	.103 A.
69	244-248	.103 A.
70	244-248	.103 A.
71	244-248	.103 A.
72	244-248	.102 A.
73	244-248	.102 A.
74	244-248	.102 A.
75	180-207 F. J. IRWIN	.102 A.
76	180-207 H.G. & H.L. REDDICK	.102 A.
77	244-248	.102 A.
78	244-248	.102 A.
79	244-248	.102 A.
80	D.A. LOFTUS	.082 A.
81	220-145 H. & J. V. HAIRE	.082 A.
82	426-226 J.L.W.	.103 A.

106	182 174-323 L. & A. L. DE	.104 A.
107	183 174-323 L. & A. L. DE	.103 A.
108	239-33 F. SMOYERA	.104 A.
109	244-248	.104 A.
110	244-248	.104 A.
111	244-248	.104 A.
112	244-248	.104 A.
113	244-248	.104 A.
114	244-248	.104 A.
115	244-248	.104 A.
116	244-248	.104 A.
117	244-248	.104 A.
118	244-248	.104 A.
119	244-248	.104 A.
120	244-248	.104 A.
121	244-248	.104 A.
122	244-248	.104 A.
123	244-248	.104 A.
124	244-248	.104 A.
125	244-248	.104 A.
126	244-248	.104 A.
127	244-248	.104 A.
128	244-248	.104 A.
129	244-248	.104 A.
130	244-248	.104 A.
131	244-248	.104 A.
132	244-248	.104 A.
133	244-248	.104 A.
134	244-248	.104 A.
135	244-248	.104 A.
136	244-248	.104 A.
137	244-248	.104 A.
138	244-248	.104 A.
139	244-248	.104 A.
140	244-248	.104 A.
141	244-248	.104 A.
142	244-248	.104 A.
143	244-248	.104 A.
144	244-248	.104 A.
145	244-248	.104 A.
146	244-248	.104 A.
147	244-248	.104 A.
148	244-248	.104 A.
149	244-248	.104 A.
150	244-248	.104 A.
151	244-248	.104 A.
152	244-248	.104 A.
153	244-248	.104 A.
154	244-248	.104 A.
155	244-248	.104 A.
156	244-248	.104 A.
157	244-248	.104 A.
158	244-248	.104 A.
159	244-248	.104 A.
160	244-248	.104 A.
161	244-248	.104 A.
162	244-248	.104 A.
163	244-248	.104 A.
164	244-248	.104 A.
165	244-248	.104 A.
166	244-248	.104 A.
167	244-248	.104 A.
168	244-248	.104 A.
169	244-248	.104 A.
170	244-248	.104 A.
171	244-248	.104 A.
172	244-248	.104 A.
173	244-248	.104 A.
174	244-248	.104 A.
175	244-248	.104 A.
176	244-248	.104 A.
177	244-248	.104 A.
178	244-248	.104 A.
179	244-248	.104 A.
180	244-248	.104 A.
181	244-248	.104 A.
182	244-248	.104 A.
183	244-248	.104 A.
184	244-248	.104 A.
185	244-248	.104 A.
186	244-248	.104 A.
187	244-248	.104 A.
188	244-248	.104 A.
189	244-248	.104 A.
190	244-248	.104 A.
191	244-248	.104 A.
192	244-248	.104 A.
193	244-248	.104 A.
194	244-248	.104 A.
195	244-248	.104 A.
196	244-248	.104 A.
197	244-248	.104 A.
198	244-248	.104 A.
199	244-248	.104 A.
200	244-248	.104 A.
201	244-248	.104 A.
202	244-248	.104 A.
203	244-248	.104 A.
204	244-248	.104 A.
205	188-229 AQUILLA LAKE COM.	.082 A.
206	244-248	.082 A.
207	244-248	.105 A.

223	244-248	.107 A. 233A
224	244-248	.107 A. 233A
225	244-248	.108 A. 231A
226	244-248	.108 A.
227	244-248	.108 A. 228A
228	244-248	.109 A. 228A
229	244-248	.109 A. 228A
230	244-248	.109 A. 228A
231	244-248	.109 A. 228A
232	244-248	.109 A. 228A
233	244-248	.109 A. 228A
234	244-248	.109 A. 228A
235	244-248	.109 A. 228A
236	244-248	.109 A. 228A
237	244-248	.109 A. 228A
238	244-248	.109 A. 228A
239	244-248	.109 A. 228A
240	244-248	.109 A. 228A
241	244-248	.109 A. 228A
242	244-248	.109 A. 228A
243	244-248	.109 A. 228A
244	244-248	.109 A. 228A
245	244-248	.109 A. 228A
246	244-248	.109 A. 228A
247	244-248	.109 A. 228A
248	244-248	.109 A. 228A
249	244-248	.109 A. 228A
250	244-248	.109 A. 228A
251	244-248	.109 A. 228A
252	244-248	.109 A. 228A
253	244-248	.109 A. 228A
254	244-248	.109 A. 228A
255	244-248	.109 A. 228A
256	244-248	.109 A. 228A
257	244-248	.109 A. 228A
258	244-248	.109 A. 228A
259	244-248	.109 A. 228A
260	244-248	.109 A. 228A
261	244-248	.109 A. 228A
262	244-248	.109 A. 228A
263	244-248	.109 A. 228A
264	244-248	.109 A. 228A
265	244-248	.109 A. 228A
266	244-248	.109 A. 228A
267	244-248	.109 A. 228A
268	244-248	.109 A. 228A
269	244-248	.109 A. 228A
270	244-248	.109 A. 228A
271	244-248	.109 A. 228A
272	244-248	.109 A. 228A
273	244-248	.109 A. 228A
274	244-248	.109 A. 228A
275	244-248	.109 A. 228A
276	244-248	.109 A. 228A
277	244-248	.109 A. 228A
278	244-248	.109 A. 228A
279	244-248	.109 A. 228A
280	244-248	.109 A. 228A
281	244-248	.109 A. 228A
282	244-248	.109 A. 228A
283	244-248	.109 A. 228A
284	244-248	.109 A. 228A
285	244-248	.109 A. 228A
286	244-248	.109 A. 228A
287	244-248	.109 A. 228A
288	244-248	.109 A. 228A
289	244-248	.109 A. 228A
290	244-248	.109 A. 228A
291	244-248	.109 A. 228A
292	244-248	.109 A. 228A
293	244-248	.109 A. 228A
294	244-248	.109 A. 228A
295	244-248	.109 A. 228A
296	244-248	.109 A. 228A
297	244-248	.109 A. 228A
298	244-248	.109 A. 228A
299	244-248	.109 A. 228A
300	244-248	.109 A. 228A
301	244-248	.109 A. 228A
302	244-248	.109 A. 228A
303	244-248	.109 A. 228A
304	244-248	.109 A. 228A
305	244-248	.109 A. 228A
306	244-248	.109 A. 228A
307	244-248	.109 A. 228A
308	244-248	.109 A. 228A
309	244-248	.109 A. 228A
310	244-248	.109 A. 228A

AQUILLA VILLAGE VOL. 4, PAGES 26-27 REC. OF PLATS
 FORMERLY
LAKE AQUILLA ESTATES COMPANY'S SUBDIVISION NO. 1

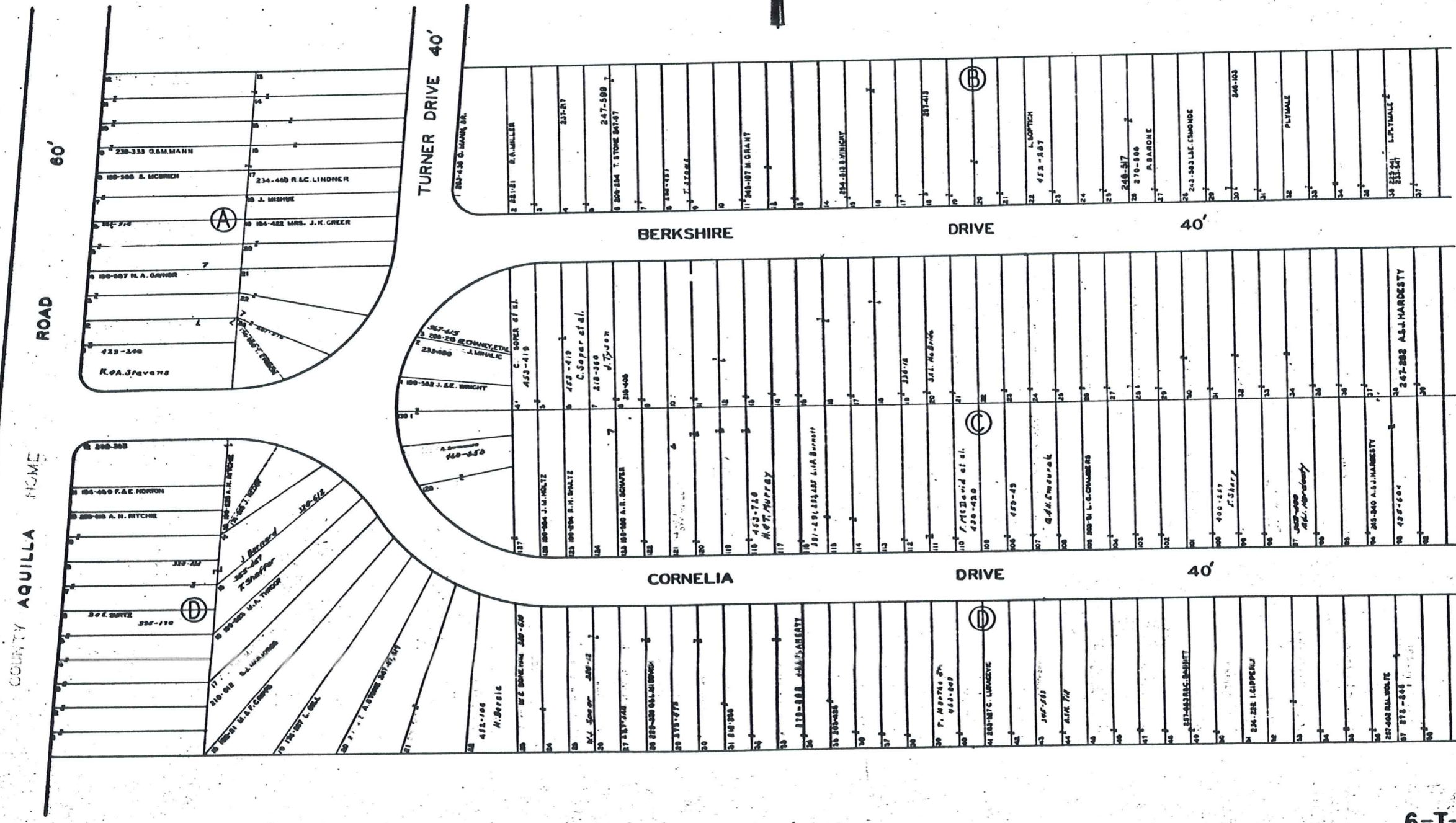
AND RESUBDIVISION OF BLOCKS I & J AND SUBLOTS
 NOS. 125 TO 141 INCLUSIVE IN BLOCK D

VOL. 2 PAGES 6, 7, 8, 9, 10, 11, 12, 19 & 33 REC. OF PLATS

SCALE 1 INCH = 40 FEET

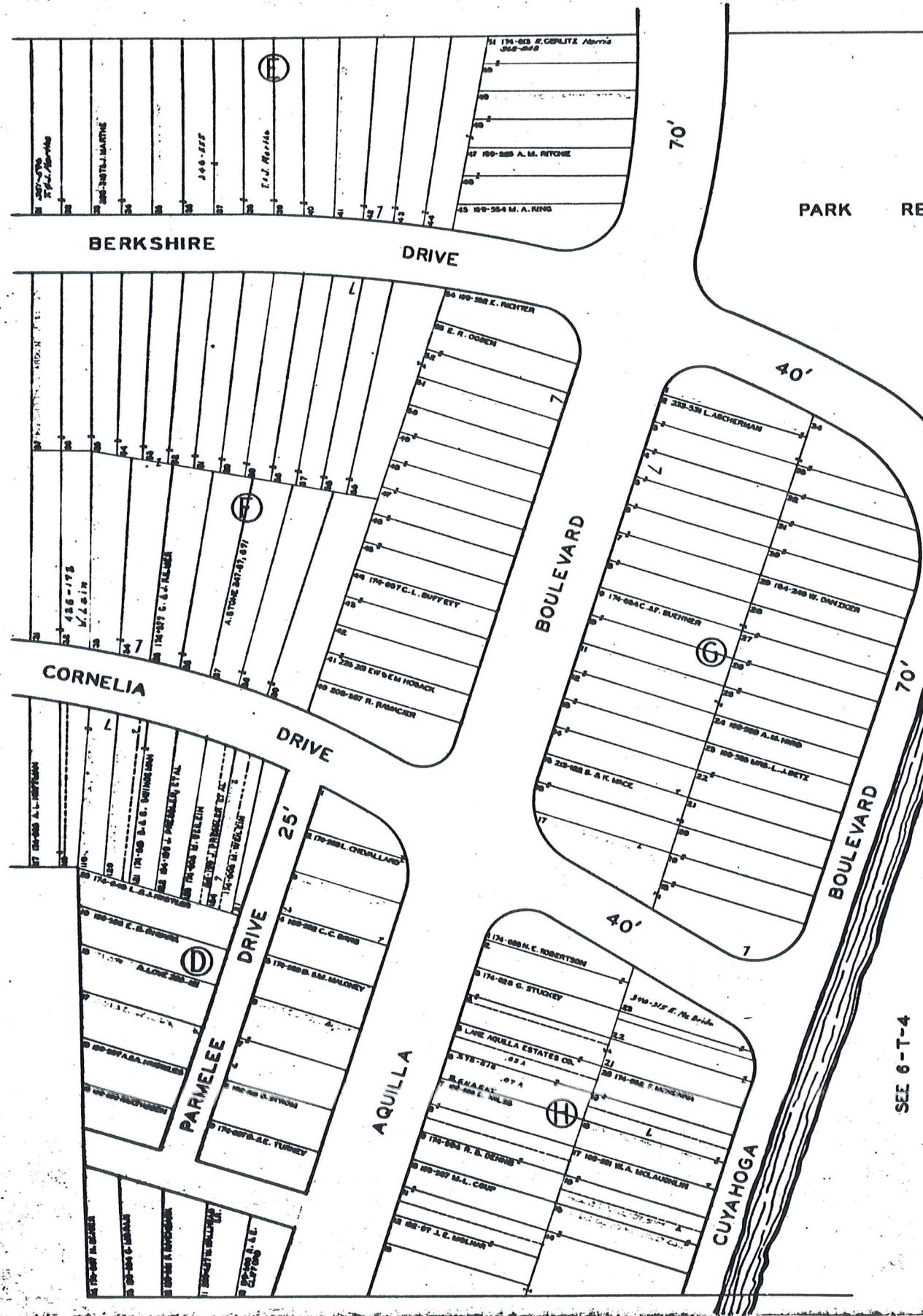
JAN. 1, 1966

PART OF ORIGINAL LOT NOS. 9 & 10 OF THE HOLMES TRACT CLARDON TOWNSHIP



SEE 6-T-2

6-T-1



SEE 6-T-2

SEE 6-T-4

AQUILLA VILLAGE VOL. 4 PAGES 26-27 REC. OF PLATS.
 FORMERLY
LAKE AQUILLA ESTATES COMPANY'S SUBDIVISION NO. 1
 AND RESUBDIVISION OF BLOCKS I & J AND SUBLOTS
 NOS. 125 TO 141 INCLUSIVE IN BLOCK D
 PART OF ORIGINAL LOT NOS. 9 & 10 OF THE HOLMES TRACT CLARIDON TOWNSHIP
 VOL. 2 PAGES 6, 7, 8, 9, 10, 11, 12, 19 & 33 REC. OF PLATS
 SCALE 1 INCH = 40 FEET JAN. 1, 1968



AQUILLA VILLAGE VOL. 4 PAGES 26-27 REC. OF PLATS
FORMERLY
LAKE AQUILLA ESTATES COMPANY'S SUBDIVISION NO. 1

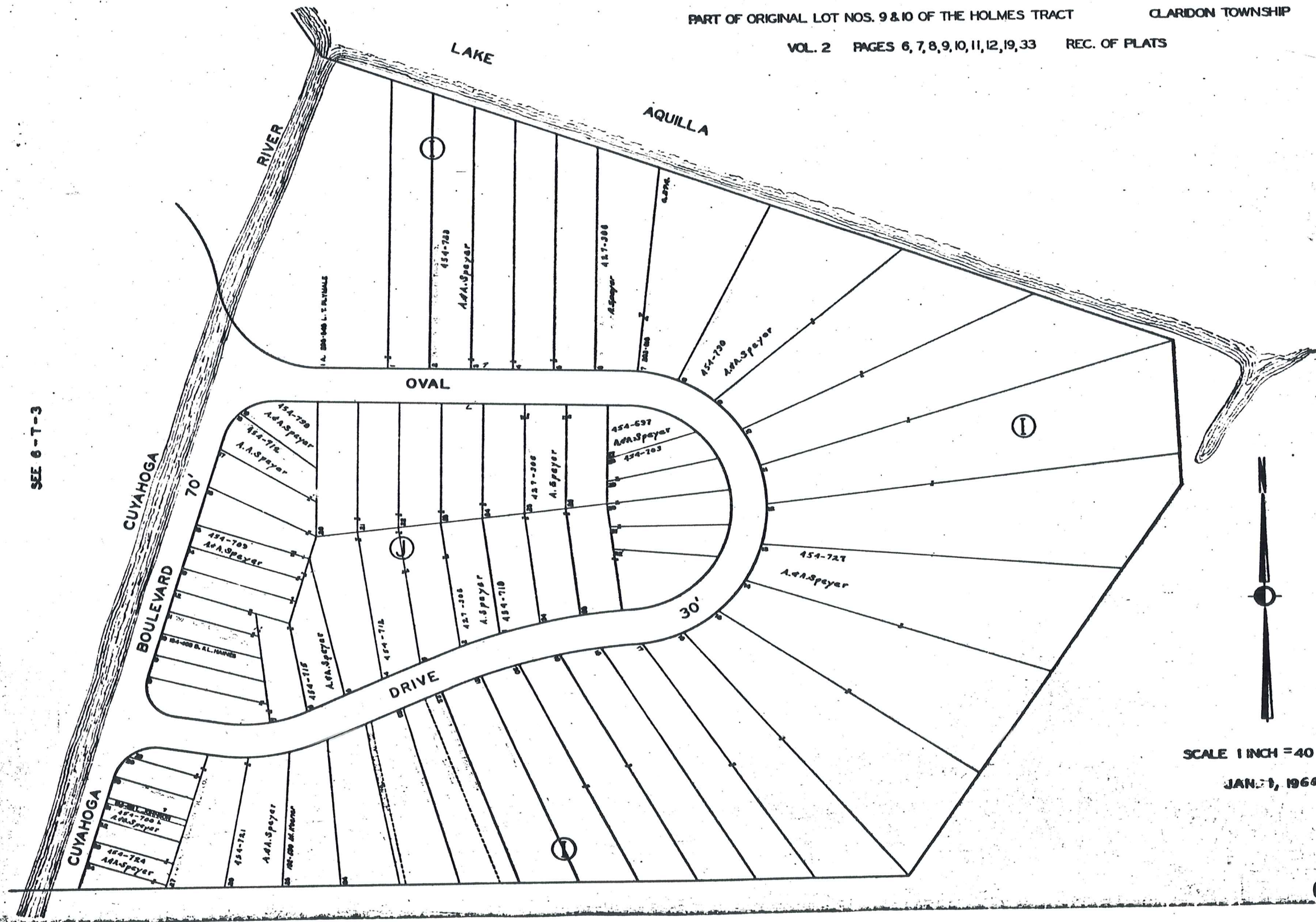
AND RESUBDIVISION OF BLOCKS I & J AND SUBLOTS
NOS. 125 TO 141 INCLUSIVE IN BLOCK D

PART OF ORIGINAL LOT NOS. 9 & 10 OF THE HOLMES TRACT

CLARDON TOWNSHIP

VOL. 2 PAGES 6, 7, 8, 9, 10, 11, 12, 19, 33 REC. OF PLATS

SEE 6-T-3



SCALE 1 INCH = 40 FEET

JAN 21, 1968

6-T-4